



# OEM Information Availability Standards Committee

July 25, 2007

Orlando FL



# Standards Committee

Tony Molla – Chair

Bob Keith – Vice Chair

Bob Matejzel

Bob Smith

Boyd Dingman

Brent Johnson

Fred Iantorno

Gene Lopez

John Bosin

Mark Algie

Roger Wright

Scott Biggs

Scott Jenkins

Steve Nantau

# Structural Procedures



- Existing OEM Recommendations
  - ◆ List Manufacturers with recommendations
  - ◆ Sources for OEM procedures
  - ◆ Most common recommendations



Make	Year	Model	Dimension Specs	Frame Specs	Paint Codes	Sectioning Points	Underbody Specs	Underhood Specs	Weld Locations	Metal Types	Nonmetallic Component
Nissan-Datsun	1996-1998	200SX/200SE-R	X	X			X	X			
Nissan-Datsun	1996-1998	240SX	X	X			X	X			
Nissan-Datsun	1996	300ZX	X	X			X	X			
Nissan-Datsun	2003-2006	350Z	X	X			X	X			
Nissan-Datsun	1996-1997	Altima	X	X			X	X			
Nissan-Datsun	1998-2002	Altima	X	X			X	X			
Nissan-Datsun	2003-2006	Altima	X	X			X	X			
Nissan-Datsun	1996-1999	Maxima	X	X			X	X			
Nissan-Datsun	2000-2003	Maxima	X	X			X	X			
Nissan-Datsun	2004-2006	Maxima	X	X			X	X			
Nissan-Datsun	1996-1999	Sentra	X	X			X	X			
Nissan-Datsun	2000-2006	Sentra	X	X			X	X			
Nissan-Datsun Truck	2005-2006	Armada	X	X			X	X			
Nissan-Datsun Truck	1998	Cargo Van	X	X			X	X			
Nissan-Datsun Truck	1996-1997	D21 Hardbody	X	X			X	X			
Nissan-Datsun Truck	1998-2004	Frontier	X	X			X	X			
Nissan-Datsun Truck	2005-2006	Frontier	X	X			X	X			
Nissan-Datsun Truck	2003-2006	Mirano	X	X			X	X			
Nissan-Datsun Truck	1996-2004	Pathfinder	X	X			X	X			
Nissan-Datsun Truck	2005-2006	Pathfinder 2WD	X	X			X	X			
Nissan-Datsun Truck	1996-1998	Quest Minivan	X	X			X	X			
Nissan-Datsun Truck	1999-2002	Quest Minivan	X	X			X	X			
Nissan-Datsun Truck	2004-2006	Quest Minivan	X	X			X	X			
Nissan-Datsun Truck	2004-2006	Titan	X	X			X	X			
Nissan-Datsun Truck	2000-2004	Xterra	X	X			X	X			
Nissan-Datsun Truck	2005-2006	Xterra 2WD	X	X			X	X			



Year	Model	Dimension Specs	Frame Specs	Paint Codes	Sectioning Points	Underbody Specs	Underhood Specs	Weld Locations	Metal Types	Nonmetallic Component
2005-2006	300 including SRT8	X	X	X	X	X	X	X	X	X
1999-2004	300M including Special	X	X	X		X	X	X		
1996-2000	Cirrus	X	X		X	X	X	X	X	
1993-1997	Concorde	X	X	X	X	X	X	X	X	
1998-2004	Concorde	X	X	X		X	X	X		X
2004-2006	Crossfire including SRT6	X	X	X		X	X	X		
1996-1998	LHS	X	X	X	X	X	X	X	X	
1999-2001	LHS	X	X	X		X	X	X		X
1996	New Yorker	X	X	X	X	X	X	X	X	
1999-2002	Prowler	X	X		X	X	X	X	X	
1996-2000	Sebring Coupe	X	X	X	X	X	X	X	X	
2001-2005	Sebring Coupe	X	X	X	X	X	X	X	X	X
1996-2000	Sebring Convertible	X	X		X	X	X	X	X	
2001-2006	Sebring Convertible	X	X	X		X	X	X		
2001-2006	Sebring Sedan	X	X			X	X	X		
1996-2000	Avenger	X	X	X	X	X	X	X	X	
2006	Charger	X	X			X	X	X		X
1996-1997	Intrepid	X	X		X	X	X	X	X	
1998-2004	Intrepid Includes R/T	X	X			X	X	X		
2005-2006	Magnum SRT8	X	X		X	X	X	X	X	
1996-2000	Neon	X	X	X	X	X	X	X	X	
2001-2005	Neon includes R/T and SRT4	X	X	X		X	X	X		
1996	Stealth	X	X	X	X	X	X	X	X	X
1996-2000	Stratus	X	X		X	X	X	X	X	
2001-2006	Stratus	X	X			X	X	X		
2001-2005	Stratus Coupe	X	X	X	X	X	X	X	X	X
1996-2002	Viper	X	X	X	X	X		X	X	
2003-2006	Viper	X	X	X		X		X	X	
1996	Summit	X	X	X	X	X	X	X	X	
1996-1998	Talon	X	X	X	X	X	X	X	X	
1996-1997	Vision	X	X		X	X	X	X	X	

# Bonding Procedures



- Existing OEM Recommendations
  - ◆ List Manufacturers with recommendations
  - ◆ Sources for OEM procedures
  - ◆ Most common recommendations



April 18, 2005 - Ford Motor Company recently released two bulletins addressing the issue of weld bonding (TSB 04-26-16 and TSB 04-26-17). These procedures address weld-bonded panel replacement for all Ford, Lincoln, and Mercury vehicles. To ensure that all weld-bonded panels are repaired according to Ford's guidelines, follow the procedure as outlined in these technical service bulletins.

This procedure is performed only on panels that have been weld-bonded during vehicle assembly. Do not attempt this procedure on other areas of the vehicle. TSB 04-26-16 states that the door shells are manufactured with adhesives only. Therefore, weld-bonding door skins is not recommended.



This is Honda policy:

### **Adhesives vs. welding:**

Repair at factory seams with the same procedure as the factory assembly process except where specified otherwise in the

### **Honda and Acura Body Repair Manuals**

Please note that the door skin is welded at the top of the skin, and is glued around the crimp. Each body repair manual states that if the reinforcement in the door is damaged then the complete door must be replaced. Door and bumper reinforcements must not be repaired or straightened.



# Sectioning Procedures

- Existing OEM Recommendations
  - ◆ List Manufacturers with recommendations
  - ◆ Sources for OEM procedures
  - ◆ Most common recommendations



This is Honda policy:

**Sectioning frame components:**

Repair at factory seams with the same procedure as the factory assembly process except where specified otherwise in the **Honda and Acura Body Repair Manuals** (rear frame rails, rear floor) or the replacement part is sold as a section (quarter panel, rocker panel or outer side panel). The quarter panel is considered to be a structural panel.



The I-CAR Vision is that every person in the collision industry has the necessary technical knowledge and skills relevant to their position to achieve a complete and safe repair.



TRAINING

GOLD CLASS PROFESSIONALS

PLATINUM INDIVIDUAL

TECHNICAL INFORMATION

myI-CAR

[Technical Information](#)

[Advantage Online](#)

[Top Technical Inquiries](#)

[Top Vehicle Sectioning Technical Inquiries](#)

[Vehicle Maker Technical Information](#)

[Airbag Parts Replacement Chart](#)

[Partial Replacement Recommendations](#)

[UPCR](#)

[Technical Information: Partial Replacement Recommendations](#)

## 2006 Honda Accord Coupe

**Body Style:** Body Style Change

**Construction Type:** Unibody

**Front Lower Rail:** No Recommendations

**Pillars, Rocker Panel, or Roof Rail:** Partial Replacement At Factory Seam Or A Sectioning Location

**Rear Rail:** Partial Replacement At Factory Seam Or A Sectioning Location

**Trunk Floor:** Partial Replacement At Factory Seam Or A Sectioning Location

[Link To Vehicle Maker Technical Information Web Site](#)

[Start New Search](#)

# UPCR



Uniform Procedures For Collision Repair® (UPCR)  
The Uniform Procedures For Collision Repair outline industry-accepted, uniform repair procedures for technicians, insurers, suppliers, vehicle makers, educators and others. They enable the collision repair industry to produce uniform, quality repairs for the consumer.

Information contained in the Uniform Procedures For Collision Repair is intended for use by professionally trained and qualified technicians. Any attempt to repair or service vehicles without the proper training, tools, or equipment may result in injury to personnel or damage or improper operation of the vehicle.

## SP Structural Parts

SP01A Rail, Front Upper (310.7 Kb)

SP01S Rail, Front Upper (494.4 Kb)

SP05A Front Strut Tower And Apron (328.3 Kb)

SP05S Front Strut Tower And Apron (501.9 Kb)

SP06A Rail, Front Lower (363.4 Kb)

SP06S Rail, Front Lower (628.8 Kb)

SP08A Rail, Rear (347.4 Kb)

SP08S Rail, Rear (465.7 Kb)

SP11A Frame (276.7 Kb)

SP11S Frame (327.6 Kb)

SP31A A-Pillar (311.3 Kb)

SP31S A-Pillar (485.0 Kb)

SP41A B-Pillar (302.6 Kb)

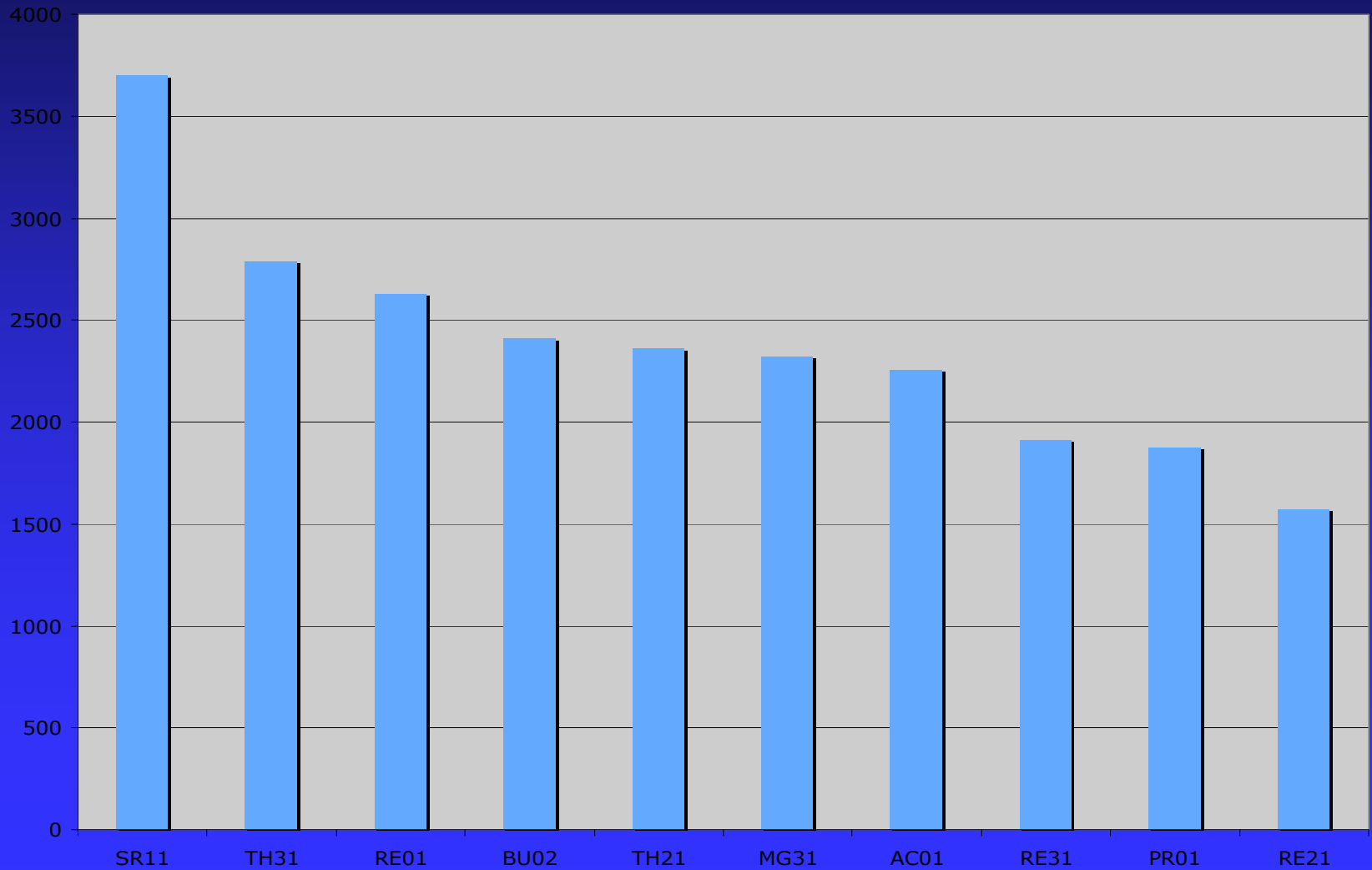
SP41S B-Pillar (485.0 Kb)





# UPCR Usage Fiscal Year 2007

F07 UPCR Downloads



# Challenges & Opportunities



## ■ OEM Information

- ◆ Lack of Commonality
- ◆ Diverse requirements (equipment & repair)
- ◆ Conclusions



# Any Questions?

## Standards Committee

### Mission Statement:

**To provide analysis and review of all questions related to the existence or development of collision industry standards in repair, personnel and shop operations.**