



# Emerging Technologies

November 2016

Las Vegas, NV

## Emerging Technologies Committee

- Scanning & Diagnostics Group
- 36 Participants – Repairers, IP's, OEM's, Insurers, Tool Providers, NASTF, I-CAR, SCRS, ASA
  - ◆ Definitions – Chuck Olsen
  - ◆ When to Scan – How to Incorporate OEM Procedures – Jake Rodenroth



**COLLISION INDUSTRY**  
CONFERENCE

November 2016

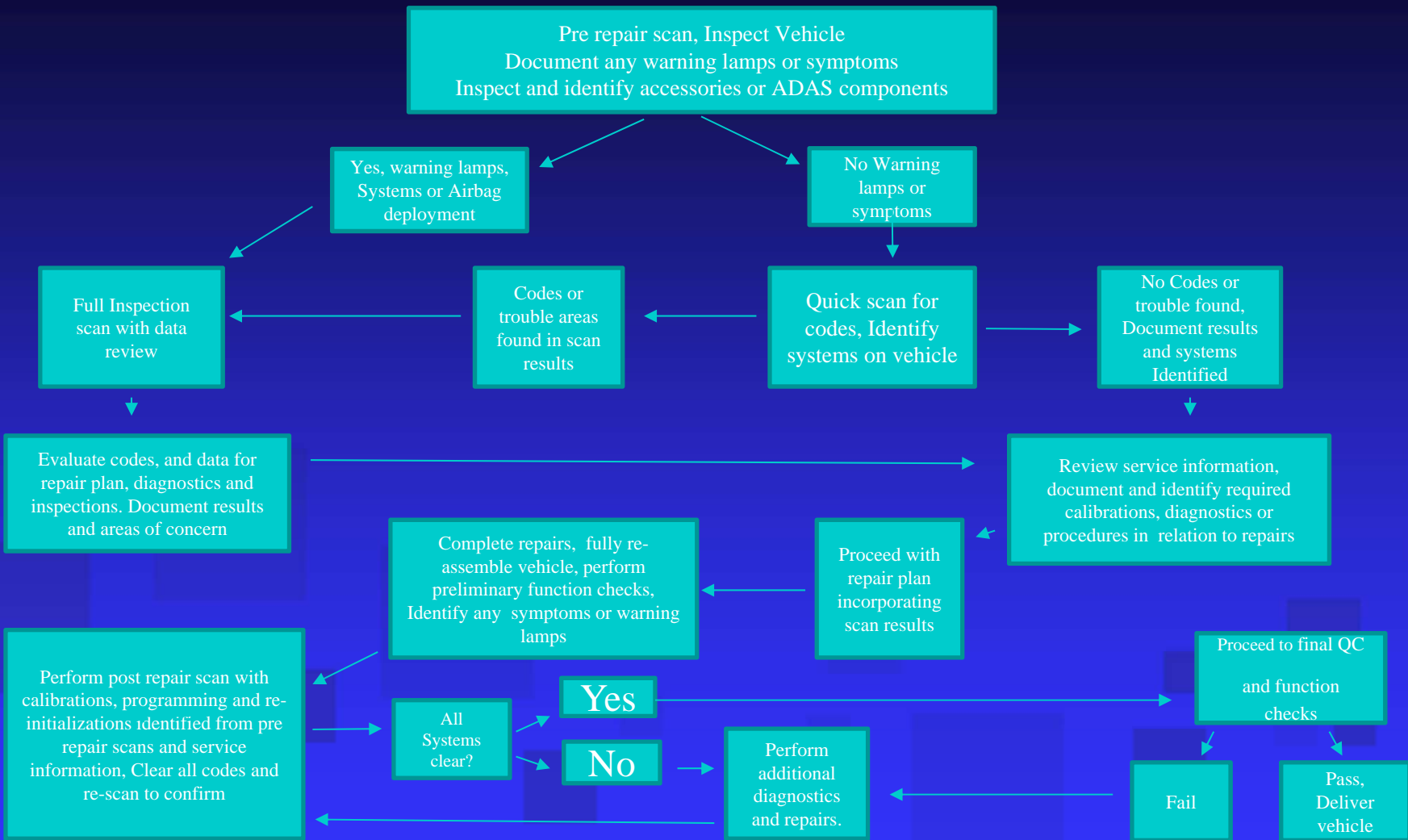
# Work Group Progress

## ■ Definitions

- ◆ Collected and discussed several existing glossaries
- ◆ First draft of diagnostic process workflow
- ◆ Coordinating with NASTF & I-CAR

## ■ When to Scan

- ◆ Ongoing discussions of scanning in repair workflow
- ◆ Is scanning now a required part of the estimating and repair blueprinting processes?



# Join The Scanning & Diagnostics Discussion

- Main Committee - [jack.rozint@Mitchell.com](mailto:jack.rozint@Mitchell.com)
- Definitions Workgroup – Chuck Olsen
- When to Scan? Workgroup – Jake Rodenroth

