



COLLISION INDUSTRY
CONFERENCE

Vehicle Data Access, Privacy & Security Committee

PRESENTED BY:

CO-CHAIRS: DAN RISLEY, TRENT TINSLEY

SPECIAL GUEST: JACK ROZINT, SVP, MITCHELL INTERNATIONAL

Vehicle Data Access, Privacy & Security Committee

Committee Members

- Dan Risley, CCC – Co-Chair
- Trent Tinsley, Entegral – Co-Chair
- Aaron Schulenberg, SCRS
- Frank Terlep, Auto Techcelerators, LLC
- Kelly Cooper, 1Collision
- Odom Wu, Tractable
- Rick Palmer, ComputerLogic, Inc.

Vehicle Data Access, Privacy & Security Committee

Previous Data Presentations

CCC, Enterprise – November 2019 CIC

<https://www.ciclink.com/wp-content/uploads/2019/11/2019-11-DataAccess.pdf>

Vehicle Data Access, Privacy & Security Committee

SPECIAL PRESENTATION

Mitchell Update on EMS/BMS

Jack Rozint

SVP, Repair Sales, Auto Physical Damage

Mitchell International



July 2020

Mitchell Update EMS/BMS

Jack Rozint, SVP Repair Sales, Auto Physical Damage



Navigating to the EMS directory

1

Login to Connect/MCE

2

Navigate to Estimate

test nik | 2005 Mazda B3000 DS | Claim RECALL01-01 | View Photos

Job Overview Primary Estimate Original Estimate \$3,089.87 (47.5%) ACV Commit

Send to APU OE Procedures Print Share PDF Export EMS

Filter Repair Lines...	Operation	Labor Type	Units	Type	Number			
Grille								
Grille Bracket	Remove/Replace	Body	0.3	New	ZZP0-50-7			
Front Door								
R Frt Door Shell	Remove/Replace	Body	5.0#	New	1F70-58-010B	1	d\$1206.85	✓
R Frt Door Outside	Refinish Only Clear Coat Only	Refinish	2.5					
R Frt Add For Jams & Interior	Refinish Only Clear Coat Only	Refinish	1.0					
L Frt Door Shell	Remove/Replace	Body	5.0#	New	1F70-59-010B	1	\$653.49	✓
L Frt Door Outside	Refinish Only Clear Coat Only	Refinish	2.3					
L Frt Add For Jams & Interior	Refinish Only Clear Coat Only	Refinish	1.0					
Additional Costs & Materials								
Select Lines								

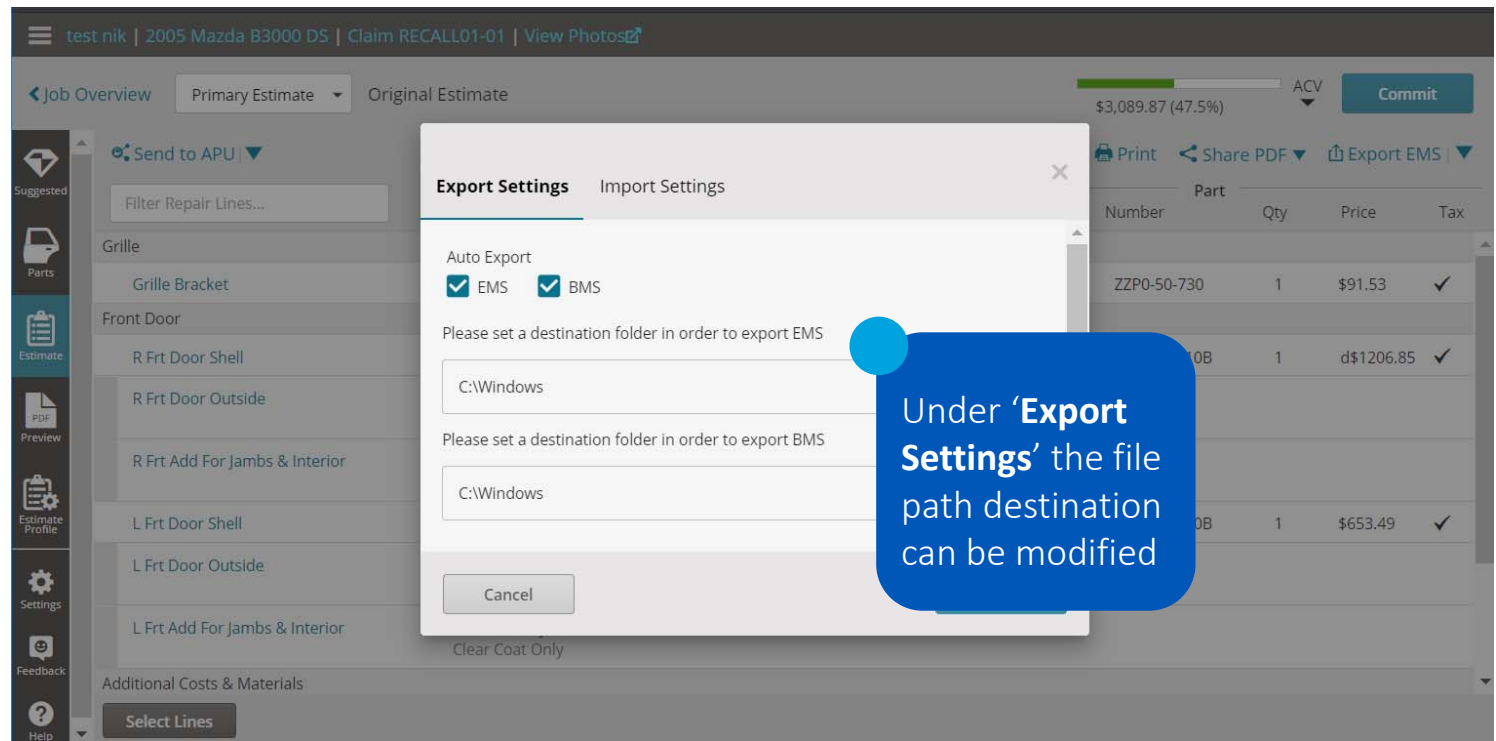
Export EMS
Export BMS
View Import/Export Settings

3

Choose 'View Settings' from Export EMS options

EMS Directory File Path

- Mitchell does not store EMS files in the system. We generate them on request.
- The File Path Location for modification is that of the user's local machine (and not a Mitchell file path/location)



Mitchell UltraMate: EMS

How to Enable EMS and Configure the EMS Paths

NOTE: If this is a multi-user installation, ensure all other users exit Mitchell Estimating.

To Enable EMS and Configure the EMS Import and Export Paths

To enable EMS in Mitchell Estimating:

1. Log into Mitchell Estimating with administrative access.
2. Click the **System Info** menu.
3. Click the **Configuration** menu.
4. Click the **Configure System Information** option.
5. Click the **Value Added Options** tab.
6. Check the EMS box.
7. Click **OK**.

Mitchell UltraMate: EMS

How to Enable EMS and Configure the EMS Paths

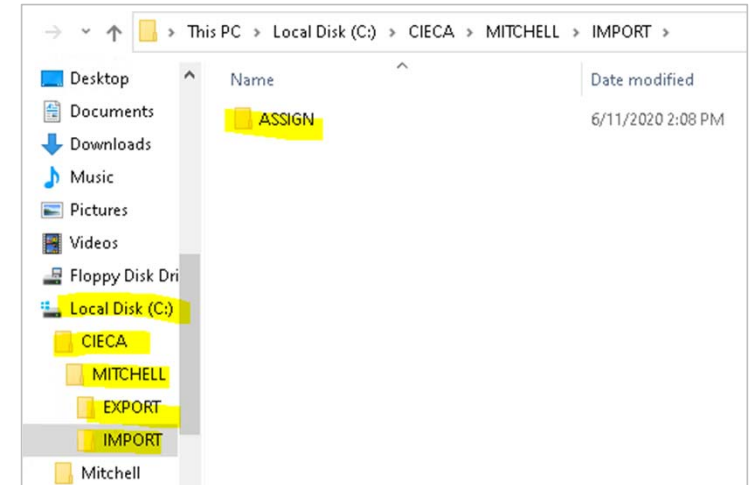
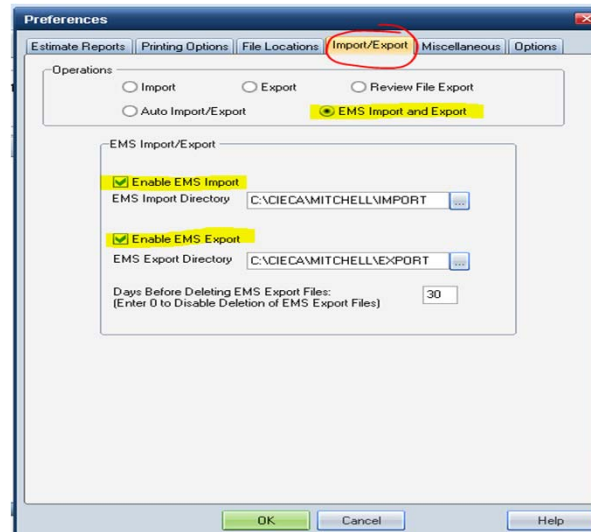
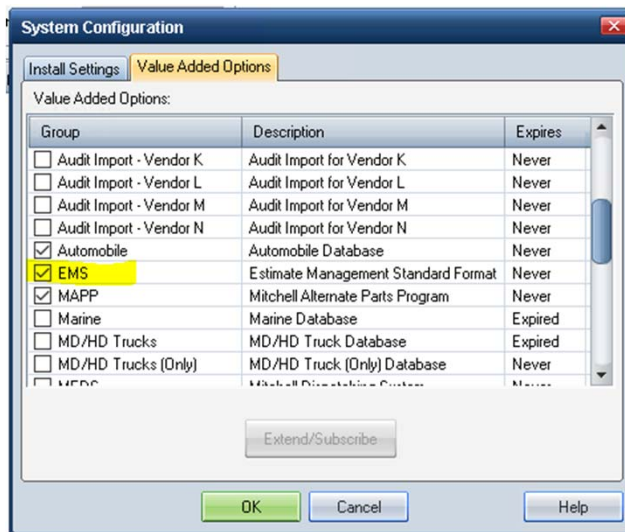
NOTE: An "Assign" folder is created automatically inside the default EMS import folder where EMS assignment files are placed for import.

To configure the EMS Import and Export paths:

1. Click the System Info menu.
2. Click Preferences.
3. Click the Import/Export tab.
4. Click the EMS Import/Export option button.
5. Check the boxes for both Enable EMS Import and Enable EMS Export.
6. Click OK. The default paths will be: C:\Cieca\Mitchell\Import and C:\Cieca\Mitchell\Export. The paths can be edited directly, or by clicking the ellipsis (browse) button.

Mitchell UltraMate: EMS

Workflow Screen Shot Examples



Technical Assistance Center

- For Mitchell Customers
- Needing Product Assistance

800.448.4401 – Option 2 for TAC Support

Vehicle Data Access, Privacy & Security Committee

Committee Presentation:

The Golden Rules of Data for the Collision Industry

Vehicle Data Access, Privacy & Security Committee

The Golden Rules of Data for the Collision Industry

The work by the committee is designed to elicit feedback and discussion by the CIC attendees

In the November 2020 CIC, the committee will share the collected feedback from companies and individuals as to whether or not CIC should consider adopting the proposed rules as a body

This presentation will be posted on the CIC website

Vehicle Data Access, Privacy & Security Committee

The Golden Rules of Data for the Collision Industry

#1: Only use end-users' data for the service(s) they intended for it to be used; never collect or use their data against them, or for business purposes other than those expressly intended and permitted.

Vehicle Data Access, Privacy & Security Committee

The Golden Rules of Data for the Collision Industry

#2: Always provide the end-user clarity, transparency, and continuing education on the data you collect, the business purposes for which it is being used.

Vehicle Data Access, Privacy & Security Committee

The Golden Rules of Data for the Collision Industry

#3: Never misappropriate end users' data, or knowingly allow any third parties to covertly, dishonestly or unfairly access or take data generated by the end-user, for their own use.

Vehicle Data Access, Privacy & Security Committee

The Golden Rules of Data for the Collision Industry

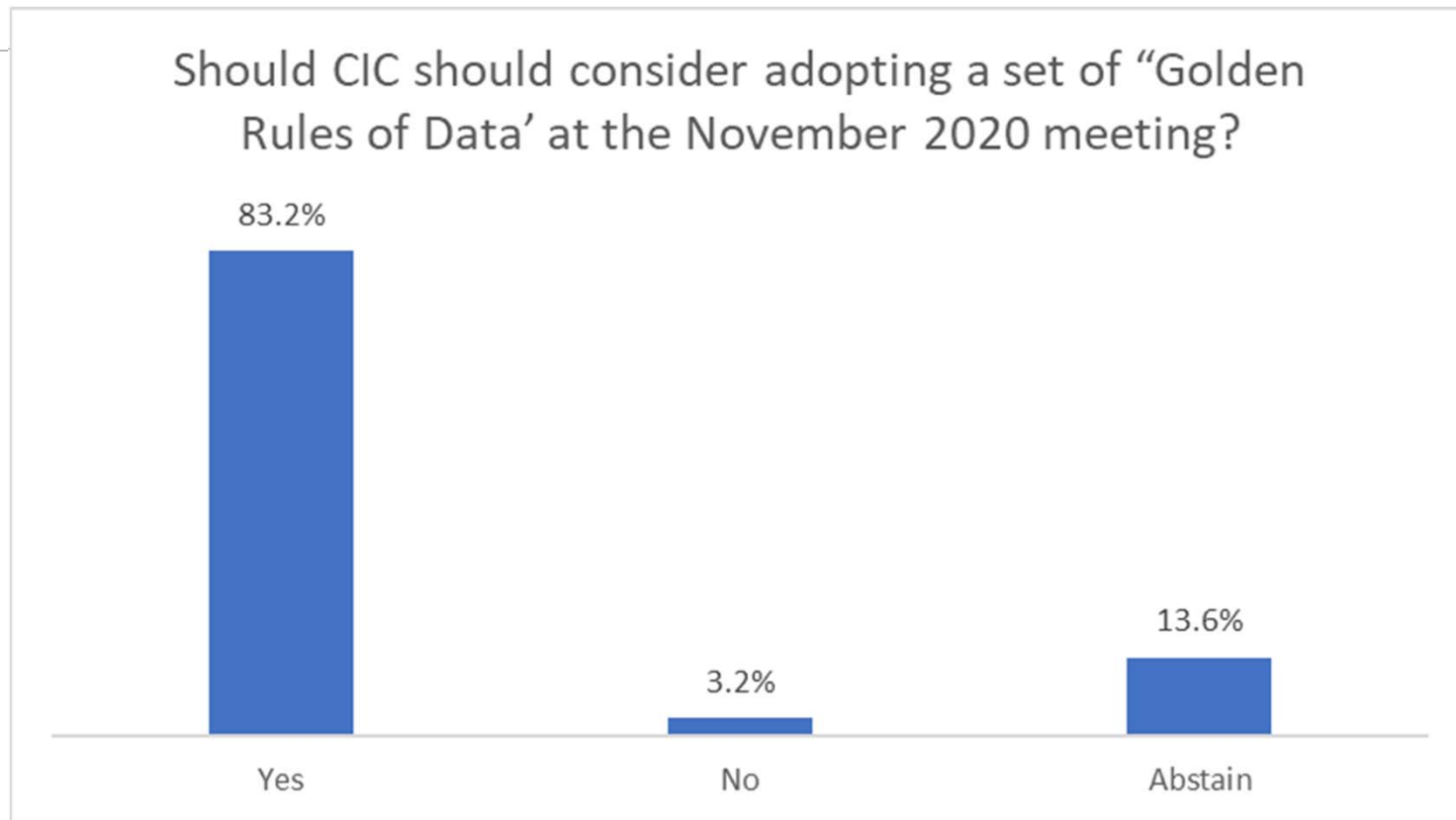
#4: Give end-users the choice to determine what data is and isn't shared, and the opportunity to opt-out of data collection outside of the primary intended purpose.

Vehicle Data Access, Privacy & Security Committee

The Golden Rules of Data for the Collision Industry

#5: Provide end-users with a clearly published, straightforward process to inquire about data that has been acquired from their business and the immediate chain of custody that data has encountered.

Audience Response Question:



Vehicle Data Access, Privacy & Security Committee

NEXT STEPS

Discuss and share your thoughts about the proposed guidelines with your own operations, your trading partners, and the committee members

In the November 2020 CIC, the committee will share the collected feedback from companies and individuals as to whether or not CIC should consider adopting the proposed rules as a body

Vehicle Data Access, Privacy & Security Committee

THANK YOU
**for your continued engagement and
support of CIC**